



Round Tower

August
2022
324

The free monthly newsletter for Cuddington, Sandiway & Delamere Park.
Provided by your Parish Council

To receive it by email contact the editor at: rreditors@gmail.com
Also available on the village website: www.cuddingtonandsandiwayonline.org

OUR NEW LOOK STATION

If you have not had occasion to go to Cuddington Station recently it is well worth a visit. Many who have used the station recently are full of praise for the 'new look' planting.

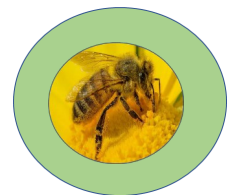
We are used to seeing the beds looking resplendent with annuals which are replaced every year but a new recruit to the Best Kept Station group has come up with the idea of making the beds insect friendly. In order to help save our struggling wildlife and after consulting sources such as the Royal Horticultural Society, the Bee Friendly Trust and CWAC's work on the Climate Emergency and the contribution local actions can make, the group have planted perennials attractive to insects and birds. Many of you will recognize some of the plants and probably grow them yourself but if not perhaps this will inspire you to start! Or maybe you would like to join the Best Kept Station group - they have lost a few



volunteers recently and you only need to give an hour or two of your time each month. The group would like to thank the Rotary Club for their help in achieving this transformation.

If you are interested in joining please contact Val Godfrey;
valgodfrey@gmail.com

or 07817214002



ST JOHN'S YESTERDAY, TODAY & TOMORROW

HERITAGE MORNING

Saturday 13th August, 10am-12noon, St John's church



**The church will be open - come along to explore St John's past and present.
Everyone welcome!**

PARISH COUNCIL NEWS

THERE WILL NOT BE A MEETING IN AUGUST

The next meeting of the parish council will take place on Monday September 19th in the meeting room of the village hall commencing at 7.15 pm. Any changes to the arrangements will be posted on the parish council noticeboards at the playing field car park and by the post box on Mere Lane.

They will also be on the parish council website; www.cuddingtonpc.uk

Contact the parish council via their e-mail: clerk@cuddingtonpc.uk

Call 01606 852444, Monday to Thursday during office hours ~ or write to ~

Julie Chrimes, Clerk to the Parish Council, Sunnyside, Withens Lane, Weaverham, CW8 3HX

Agendas and Minutes of meetings can be found at; www.cuddingtonpc.uk

ST JOHN'S CHURCH

For help or advice about general church related issues, please contact the churchwardens, Steve (883976) or Kathryn (889879).

Eco Matters St John's is delighted to announce that the church has gained a Bronze Eco Church Award! This has been made possible by the wholehearted support and commitment of the church community. They will continue to work together as a church to complete further actions to care for our precious earth, progressing towards a Silver and, hopefully (eventually), a Gold Eco Church Award. You can find out more about the Eco Church scheme here:

<https://ecochurch.arochoa.org.uk/>

Fireside in the Vicarage Garden. Revd. Ruth invites you to drop in and chat by the firepit (weather permitting), 7-9pm, Thursday 11th August. Drinks provided. Bring biscuits, crisps or marshmallows to share!

An exciting programme of redevelopment is taking place at the church. It has been designed to make the building more user friendly and versatile. Phase 1 will consist of:

- Installing a temporary ramp at the main door to facilitate access.
- Removing the front 2 rows of pews to create space for wheelchairs, and enhance the space for events
- Adding pew cushions for more comfort!
- Installing hand rails on the chancel steps
- Restoring the baptistry to its original purpose

It is also expected that the long awaited repairs to the church tower will commence soon.

NORTHWICH COMMUNITY SUPPORT FOOD HUB

Tuesdays 10.30-11.30am St John's church hall Norley Road.

Please wear masks ~ Bring a bag ~ £1 payable at the door.

Please park at the village car park next to Sandiway school.

This is a no food waste initiative to stop food going to landfill.

No referrals are required - all are welcome.

PCSO SURGERIES IN AUGUST with Michelle Gillett

Friday 5th 1200-1300 hours, WEAVERHAM community centre car park CW83HY

Tuesday 23rd 1200-1300 hours, ACTON BRIDGE parish room CW83RA

Friday 26th 1200-1300 hours, SANDIWAY LIBRARY car park CW82NS

Tuesday 30th 1900-2000 hours, CUDDINGTON village hall car park, Norley Road CW8 2LB

Wednesday 31st 1900-2000 hours DELAMERE PARK leisure centre car park CW82UJ

WHAT'S ON?

NORTHWICH PROBUS - Tuesdays, 10.15am, Blue Cap

August 16th, Speaker: Mischa Linden - Violin Recital

August 30th, Speaker: Judith Walmsley - Working with the Homeless

Further information from 01606 852673 or: www.northwichprobus.org.uk

YOUTH CLUB - open for 11-17 year olds from 7.30pm - 9.30pm, Youth and Community Centre, Norley Road playing field. Closed for the summer holidays. Due to open again in September.

For further information please ring 07775733333

EDDISBURY AND SANDIWAY FLOWER CLUB - **No meeting in August.** Next meeting, Tuesday September 13th, Owley Wood Recreation Club, Barrymore Road, Weaverham.

Demonstrator: Linda Hardman - Back to the Roots. Visitors welcome - £5

For more information visit: eddisburyandsandiwayflowerclub@gmail.com or call 01606 75405

CUDDINGTON & SANDIWAY WI - Village Hall, Norley Road, Thursday August 11th, 1.45pm.

Speaker: Kate Brophy from Fryer's Roses - Care and Propagation of Roses.

Competition - A single Rose

PRAYER HOUR/COFFEE HOUR - Every Saturday, 10-11am, St John's Church. You are warmly invited to come and spend some time in our beautiful church, to light a candle and pray, or to talk to our welcomers. Coffee is now being served from 11am-12 noon

FRIENDLY THURSDAYS - White Barn, 2.30-4pm every Thursday. A chance to meet and chat in a friendly environment. Free tea and biscuits

ARK CAFÉ - St John's Church Hall. Fridays 9am-2pm (10am-2pm in school holidays). Serving a selection of Fair Trade teas and freshly ground Kingdom Coffee.

YOGA AND SELF CARE with Holly Jaskolka

NEW CLASS STARTING AT THE VILLAGE HALL

Monthly on the first Wednesday of the month, 7.30-9.30pm

This is a gentle yoga class followed by journaling, goal setting and relaxation to help people to take time to practice self care. Contact Holly on 07548 851504 or hollyjaskolka@googlemail.com

RAILWAY LINES *Please check before you travel, alterations can happen at short notice:*

<https://www.northernrailway.co.uk/travel/timetables> ~or ~0800 200 6060.

Monday 1st to Thursday 4th August.

The 22.52 from Chester to Manchester (due Cuddington 23.13) will be a bus, calling at Cuddington at 23.42.

The 22.42 and 23.41 from Manchester Piccadilly to Chester (due Cuddington 23.52 and 00.48 respectively) will be buses calling at Cuddington to set down only at 00.37 and 01.36 respectively. Additional buses to Chester will depart Knutsford at 23.25 and 00.25, calling at Cuddington at 00.09 and 01.08

Every care is taken to provide accurate information, however please be aware that things can change after we have gone to print. Where possible we have included a phone number for you to confirm the information given. You can find up to date information on our village website including travel, news, events, and much more : www.cuddingtonandsandiwayonline.org

POLICE CONTACT DETAILS

Contact our PCSO, Michelle Gillett at;

michelle.gillett@cheshire.pnn.police.uk or ring her on 07894 510 064

Contact the police on 101. For emergencies only use 999

Non emergency contact with Northwich Police: northwich.lpu@cheshire.pnn.police.uk

Alternatively ring 101 and ask to be put through to your local neighbourhood officer. This may be an answer phone service. Your call will be returned.

To report a crime anonymously ring Crimestoppers on 0800 555 111

You can also call Action Fraud on 0300 123 2040 or visit www.actionfraud.police.uk



VILLAGE HALL NOTICEBOARD

Afternoon Tea

There will not be an Afternoon Tea in August

The next one will be on **Thursday September 1st, 2 - 4 pm**

£1.50 for tea/coffee and cake. All welcome.

250 Club July Draw winners

1st prize £40 winner - member number 214 of Weaverham Road

2nd prize £20 winner - member number 159 of Nixon Road

For further information visit; www.cuddingtonandsandiwayvillagehall.org.uk

email; enquiries@cuddingtonandsandiwayvillagehall.org.uk or ring 01606 888931



SANDIWAY LIBRARY IN AUGUST

Build it! Make it! STEAM activities for 8yrs + Booking in branch essential

- | | | |
|-----------|-------------|--|
| 01 Monday | 2.30-3.30pm | Micro Motors - Build a mini peg car then see how it performs on the race track |
| 08 Monday | 2.30-3.30pm | Balancing Bots - Create your own gravity defying robot and find out how it works. |
| 15 Monday | 2.30-3.30pm | Build your own Guitar - Get ready to make some noise! Build your own guitar using micro: bit and simple programming |
| 22 Monday | 2.30-3.30pm | Dizzy Disks - Upcycle a CD to create a fun spin toy |

Bookable events via Ticketsource:

- | | | |
|-------------|---------|---|
| 09 Tuesday | 10.30am | Animals Take Over - Join animal expert Lyndsay, meet, handle and learn about her animals |
| 25 Thursday | 10.30am | Dogs Trust - Stories, quizzes and crafts for children who really like dogs or are a bit worried about them |

Summer Holiday activities

- | | | |
|-----------|-------------|---|
| Tuesdays | 10.30-11am | Pre-school Social: Refreshments, Play, Chat |
| | 2-4pm | Creative Hub: Drop in activities for all ages |
| Thursdays | 10-12pm | Construction Club |
| | 3.30-4pm | Storytime: Stories, rhymes and games. |
| Fridays | 10.30-11am | Baby Social - Enjoy refreshments and chat with other parents and carers. |
| | 2.30-4.30pm | Family Board Games |
| Saturdays | 10-12pm | Construction Club |

For more details please see staff or contact 01606 2710767

Email: sandiway.library@cheshirewestandchester.gov.uk

Copy for the next issue should be emailed to; rteitors@gmail.com or taken to the library or JD's Hair Shop by Friday August 12th